

Product Information Sheet

COMMISSION DELEGATED REGULATION (EU) 2019/2015 with regard to energy labelling of light sources

Supplier's name or trade mark: Nordlux

Supplier's address: Nordlux A/S, Østre Havnegade 34, 9000 Aalborg, DK

Model identifier: 2112245003

Type of light source:

Lighting technology used:	LED	Non-directional or directional:	DLS
Light source cap-type (or other electric interface)	LED Module		
Mains or non-mains:	NMLS	Connected light source (CLS):	No
Colour-tuneable light source:	No	Envelope:	-
High luminance light source:	No		
Anti-glare shield:	No	Dimmable:	Yes

Product parameters

Parameter	Value	Parameter	Value
-----------	-------	-----------	-------

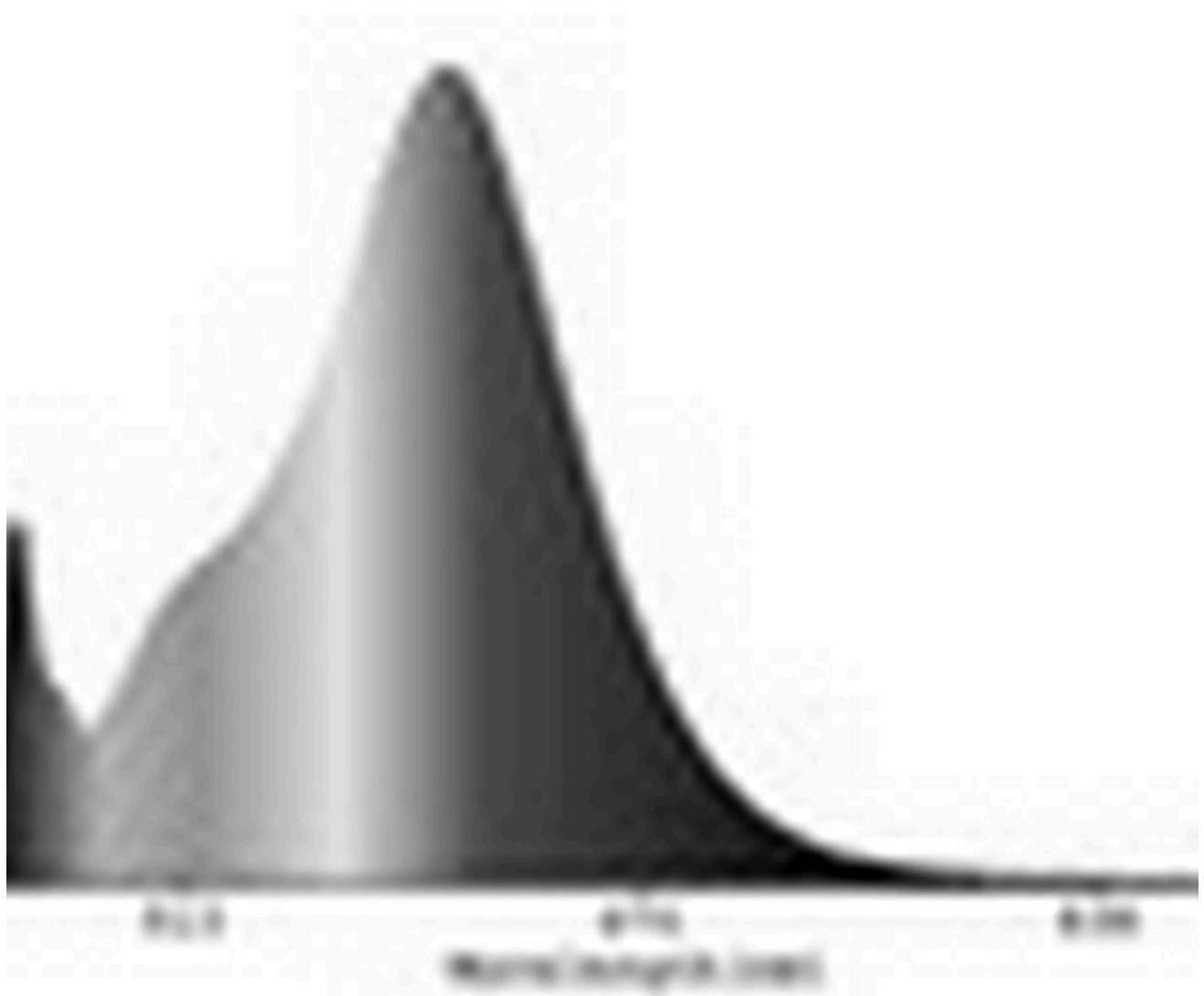
General product parameters:

Energy consumption in on-mode (kWh/1000 h), rounded up to the nearest integer	4	Energy efficiency class	F
Useful luminous flux (ϕ_{use}), indicating if it refers to the flux in a sphere (360°), in a wide cone (120°) or in a narrow cone (90°)	320 in Narrow cone (90°)	Correlated colour temperature, rounded to the nearest 100 K, or the range of correlated colour temperatures, rounded to the nearest 100 K, that can be set	2 700
On-mode power (P_{on}), expressed in W	3,2	Standby power (P_{sb}), expressed in W and rounded to the second decimal	0,00
Networked standby power (P_{net}) for CLS, expressed in W and rounded to the second decimal	-	Colour rendering index, rounded to the nearest integer, or the range of CRI-values that can be set	80
Outer dimensions without separate control gear, lighting control	Height	400	Spectral power distribution in the range 250 nm to 800 nm, at full-load
	Width	155	
	Depth	100	
			See image in last page

parts and non-lighting control parts, if any (millimetre)			
Claim of equivalent power ^(a)	-	If yes, equivalent power (W)	-
		Chromaticity coordinates (x and y)	0,463 0,420
Parameters for directional light sources:			
Peak luminous intensity (cd)	5 563	Beam angle in degrees, or the range of beam angles that can be set	41
Parameters for LED and OLED light sources:			
R9 colour rendering index value	0	Survival factor	1,00
the lumen maintenance factor	0,95		

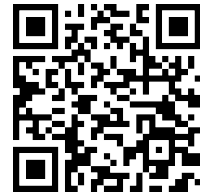
(a) : not applicable;

(b) : not applicable;



EPREL registration number: 798119

Model placed on the Union market from 21/06/2021.



<https://eprel.ec.europa.eu/qr/798119>

Supplier: Nordlux A/S (Manufacturer)

Website: www.nordlux.dk

Customer care service:

Name: Nordlux A/S

Website: <https://www.nordlux.dk>

Email: nordlux@nordlux.dk

Phone: +45 98181611

Address:

Østre Havnegade 34
9000 Aalborg
Denmark