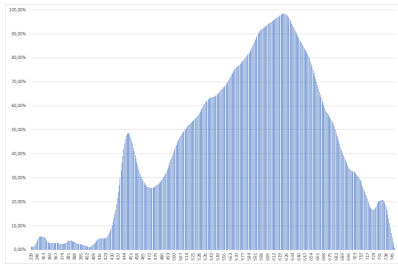




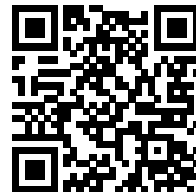
separate control gear, lighting control parts and non-lighting control parts, if any (millimetre)	Depth	360	range 250 nm to 800 nm, at full-load	
Claim of equivalent power <sup>(a)</sup>		-	If yes, equivalent power (W)	-
			Chromaticity coordinates (x and y)	0,430 0,400
<b>Parameters for LED and OLED light sources:</b>				
R9 colour rendering index value		20	Survival factor	-
the lumen maintenance factor		-		
<b>Parameters for LED and OLED mains light sources:</b>				
displacement factor (cos $\phi_1$ )		0,50	Colour consistency in McAdam ellipses	3
Claims that an LED light source replaces a fluorescent light source without integrated ballast of a particular wattage.		-(b)	If yes then replacement claim (W)	-
Flicker metric (Pst LM)		0,5	Stroboscopic effect metric (SVM)	0,6

(a) '-': not applicable;

(b) '-': not applicable;



Model placed on the Union market from 01/01/2013



**EPREL registration number:** 713992

<https://eprel.ec.europa.eu/qr/713992>

**Supplier:** Gnosjö Konstsmide AB (Importer)

**Website:**

**Customer care service:**

**Name:** Technical Support

**Website:**

**Email:** [info@konstsmide.se](mailto:info@konstsmide.se)

**Phone:** +46370332000

**Address:**

Gnosjö Konstsmide AB

Box 54

335 22 Gnosjö

Sweden