

Product Information Sheet

COMMISSION DELEGATED REGULATION (EU) 2019/2015 with regard to energy labelling of light sources

Supplier's name or trade mark: Gnosjö Konstsmide AB

Supplier's address: Technical Support, Gnosjö Konstsmide AB Box 54 335 22 Gnosjö Sweden

Model identifier: 564

Type of light source:

| | | | |
|---|---|---------------------------------|------|
| Lighting technology used: | LED | Non-directional or directional: | NDLS |
| Light source cap-type (or other electric interface) | JST BHR-02(8.0)VS-1N or CviLux CP0403S0043 | | |
| Mains or non-mains: | MLS | Connected light source (CLS): | No |
| Colour-tuneable light source: | No | Envelope: | - |
| High luminance light source: | No | | |
| Anti-glare shield: | No | Dimmable: | Yes |

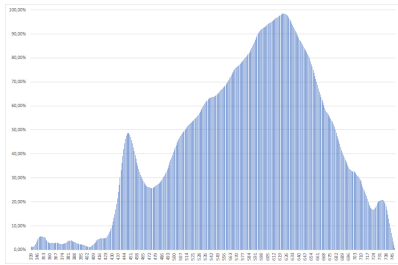
Product parameters

| Parameter | Value | Parameter | Value |
|--|-------------------------|--|------------------------------------|
| General product parameters: | | | |
| Energy consumption in on-mode (kWh/1000 h), rounded up to the nearest integer | 9 | Energy efficiency class | F |
| Useful luminous flux (ϕ_{use}), indicating if it refers to the flux in a sphere (360°), in a wide cone (120°) or in a narrow cone (90°) | 700 in Wide cone (120°) | Correlated colour temperature, rounded to the nearest 100 K, or the range of correlated colour temperatures, rounded to the nearest 100 K, that can be set | 3 000 |
| On-mode power (P_{on}), expressed in W | 8,0 | Standby power (P_{sb}), expressed in W and rounded to the second decimal | 0,00 |
| Networked standby power (P_{net}) for CLS, expressed in W and rounded to the second decimal | - | Colour rendering index, rounded to the nearest integer, or the range of CRI-values that can be set | 85 |
| Outer dimensions without separate con- | Height | 300 | Spectral power distribution in the |
| | Width | 295 | |
| | Depth | 440 | |
| | | | See image in last page |

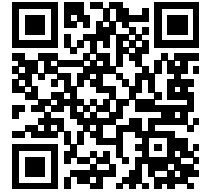
| | | | | |
|---|------|--|---------------------------------------|----------------|
| trol gear, lighting control parts and non-lighting control parts, if any (millimetre) | | | range 250 nm to 800 nm, at full-load | |
| Claim of equivalent power ^(a) | - | | If yes, equivalent power (W) | - |
| | | | Chromaticity coordinates (x and y) | 0,430 0,400 |
| Parameters for LED and OLED light sources: | | | | |
| R9 colour rendering index value | 20 | | Survival factor | - |
| the lumen maintenance factor | - | | | |
| Parameters for LED and OLED mains light sources: | | | | |
| displacement factor (cos ϕ_1) | 0,50 | | Colour consistency in McAdam ellipses | 3 |
| Claims that an LED light source replaces a fluorescent light source without integrated ballast of a particular wattage. | _(b) | | If yes then replacement claim (W) | - |
| Flicker metric (Pst LM) | 0,5 | | Stroboscopic effect metric (SVM) | 0,6 |

(a) : not applicable;

(b) : not applicable;



Model placed on the Union market from 01/01/2016



EPREL registration number: 725372

<https://eprel.ec.europa.eu/qr/725372>

Supplier: Gnosjö Konstsmide AB (Importer)

Website:

Customer care service:

Name: Technical Support

Website:

Email: info@konstsmide.se

Phone: +46370332000

Address:

Gnosjö Konstsmide AB

Box 54

335 22 Gnosjö

Sweden