

Product Information Sheet

COMMISSION DELEGATED REGULATION (EU) 2019/2015 with regard to energy labelling of light sources

Supplier's name or trade mark: Gnosjö Konstsmide AB

Supplier's address: Technical Support, Gnosjö Konstsmide AB Box 54 335 22 Gnosjö Sweden

Model identifier: 590

Type of light source:

Lighting technology used:	LED	Non-directional or directional:	NDLS
Light source cap-type (or other electric interface)	JST BHR-02(8.0)VS-1N or CviLux CP0403S0043		
Mains or non-mains:	MLS	Connected light source (CLS):	No
Colour-tuneable light source:	No	Envelope:	-
High luminance light source:	No		
Anti-glare shield:	No	Dimmable:	Yes

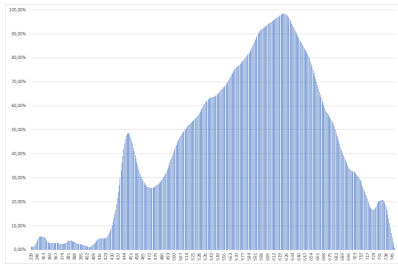
Product parameters

Parameter	Value	Parameter	Value
General product parameters:			
Energy consumption in on-mode (kWh/1000 h), rounded up to the nearest integer	18	Energy efficiency class	F
Useful luminous flux (ϕ_{use}), indicating if it refers to the flux in a sphere (360°), in a wide cone (120°) or in a narrow cone (90°)	1 400 in Wide cone (120°)	Correlated colour temperature, rounded to the nearest 100 K, or the range of correlated colour temperatures, rounded to the nearest 100 K, that can be set	3 000
On-mode power (P_{on}), expressed in W	16,0	Standby power (P_{sb}), expressed in W and rounded to the second decimal	0,00
Networked standby power (P_{net}) for CLS, expressed in W and rounded to the second decimal	-	Colour rendering index, rounded to the nearest integer, or the range of CRI-values that can be set	85
Outer dimensions without separate con-	Height	200	Spectral power distribution in the See image in last page
	Width	115	
	Depth	180	

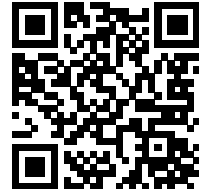
trol gear, lighting control parts and non-lighting control parts, if any (millimetre)			range 250 nm to 800 nm, at full-load	
Claim of equivalent power ^(a)	-		If yes, equivalent power (W)	-
			Chromaticity coordinates (x and y)	0,430 0,400
Parameters for LED and OLED light sources:				
R9 colour rendering index value	20		Survival factor	-
the lumen maintenance factor	-			
Parameters for LED and OLED mains light sources:				
displacement factor (cos ϕ_1)	0,50		Colour consistency in McAdam ellipses	3
Claims that an LED light source replaces a fluorescent light source without integrated ballast of a particular wattage.	_(b)		If yes then replacement claim (W)	-
Flicker metric (Pst LM)	0,5		Stroboscopic effect metric (SVM)	0,6

(a) : not applicable;

(b) : not applicable;



Model placed on the Union market from 01/01/2013



EPREL registration number: 725388

<https://eprel.ec.europa.eu/qr/725388>

Supplier: Gnosjö Konstsmide AB (Importer)

Website:

Customer care service:

Name: Technical Support

Website:

Email: info@konstsmide.se

Phone: +46370332000

Address:

Gnosjö Konstsmide AB

Box 54

335 22 Gnosjö

Sweden