

# Product Information Sheet

COMMISSION DELEGATED REGULATION (EU) 2019/2015 with regard to energy labelling of light sources

**Supplier's name or trade mark:** Gnosjö Konstsmide AB

**Supplier's address:** Technical Support, Gnosjö Konstsmide AB Box 54 335 22 Gnosjö Sweden

**Model identifier:** 591

## Type of light source:

Lighting technology used:	LED	Non-directional or directional:	NDLS
Light source cap-type (or other electric interface)	JST BHR-02(8.0)VS-1N or CviLux CP0403S0043		
Mains or non-mains:	MLS	Connected light source (CLS):	No
Colour-tuneable light source:	No	Envelope:	-
High luminance light source:	No		
Anti-glare shield:	No	Dimmable:	Yes

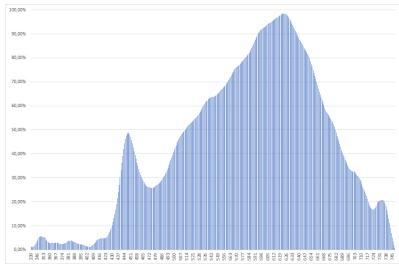
## Product parameters

Parameter	Value	Parameter	Value
<b>General product parameters:</b>			
Energy consumption in on-mode (kWh/1000 h), rounded up to the nearest integer	18	Energy efficiency class	F
Useful luminous flux ( $\phi_{use}$ ), indicating if it refers to the flux in a sphere (360°), in a wide cone (120°) or in a narrow cone (90°)	1 400 in Wide cone (120°)	Correlated colour temperature, rounded to the nearest 100 K, or the range of correlated colour temperatures, rounded to the nearest 100 K, that can be set	3 000
On-mode power ( $P_{on}$ ), expressed in W	16,0	Standby power ( $P_{sb}$ ), expressed in W and rounded to the second decimal	0,00
Networked standby power ( $P_{net}$ ) for CLS, expressed in W and rounded to the second decimal	-	Colour rendering index, rounded to the nearest integer, or the range of CRI-values that can be set	85
Outer dimensions without separate con-	Height	955	Spectral power distribution in the
	Width	100	
	Depth	200	
			See image in last page

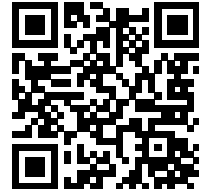
trol gear, lighting control parts and non-lighting control parts, if any (millimetre)			range 250 nm to 800 nm, at full-load	
Claim of equivalent power <sup>(a)</sup>	-		If yes, equivalent power (W)	-
			Chromaticity coordinates (x and y)	0,430 0,400
<b>Parameters for LED and OLED light sources:</b>				
R9 colour rendering index value	20		Survival factor	-
the lumen maintenance factor	-			
<b>Parameters for LED and OLED mains light sources:</b>				
displacement factor (cos $\phi_1$ )	0,50		Colour consistency in McAdam ellipses	3
Claims that an LED light source replaces a fluorescent light source without integrated ballast of a particular wattage.	_(b)		If yes then replacement claim (W)	-
Flicker metric (Pst LM)	0,5		Stroboscopic effect metric (SVM)	0,6

(a) : not applicable;

(b) : not applicable;



Model placed on the Union market from 01/01/2013



**EPREL registration number:** 725418

<https://eprel.ec.europa.eu/qr/725418>

**Supplier:** Gnosjö Konstsmide AB (Importer)

**Website:**

**Customer care service:**

**Name:** Technical Support

**Website:**

**Email:** [info@konstsmide.se](mailto:info@konstsmide.se)

**Phone:** +46370332000

**Address:**

Gnosjö Konstsmide AB

Box 54

335 22 Gnosjö

Sweden