

# Product Information Sheet

COMMISSION DELEGATED REGULATION (EU) 2019/2015 with regard to energy labelling of light sources

**Supplier's name or trade mark:** Optodrive

**Supplier's address:** CEO, Köpingsvägen 4, 73231 Arboga Sverige, SE

**Model identifier:** Clara AC.10.230.24.830-IP65.FF

## Type of light source:

Lighting technology used:	LED	Non-directional or directional:	NDLS
Light source cap-type (or other electric interface)	Wire		
Mains or non-mains:	MLS	Connected light source (CLS):	No
Colour-tuneable light source:	No	Envelope:	-
High luminance light source:	No		
Anti-glare shield:	No	Dimmable:	Yes

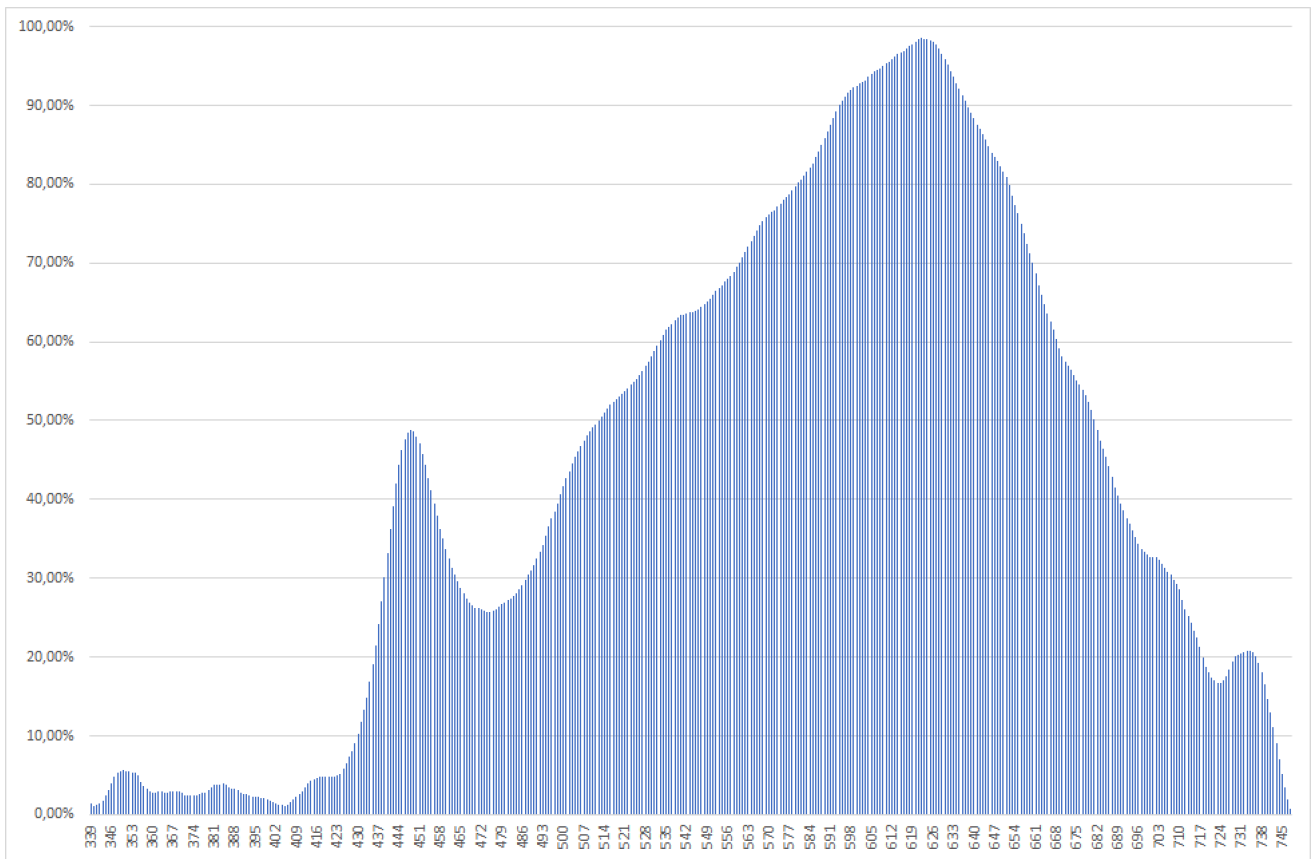
## Product parameters

Parameter	Value	Parameter	Value
<b>General product parameters:</b>			
Energy consumption in on-mode (kWh/1000 h), rounded up to the nearest integer	10	Energy efficiency class	E
Useful luminous flux ( $\phi_{use}$ ), indicating if it refers to the flux in a sphere (360°), in a wide cone (120°) or in a narrow cone (90°)	1 100 in Wide cone (120°)	Correlated colour temperature, rounded to the nearest 100 K, or the range of correlated colour temperatures, rounded to the nearest 100 K, that can be set	3 000
On-mode power ( $P_{on}$ ), expressed in W	10,0	Standby power ( $P_{sb}$ ), expressed in W and rounded to the second decimal	0,00
Networked standby power ( $P_{net}$ ) for CLS, expressed in W and rounded to the second decimal	-	Colour rendering index, rounded to the nearest integer, or the range of CRI-values that can be set	85
Outer dimensions without separate control gear, lighting control	Height	16	Spectral power distribution in the range 250 nm to 800 nm, at full-load
	Width	50	
	Depth	50	
			See image in last page

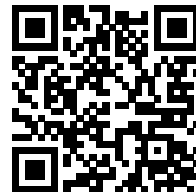
parts and non-lighting control parts, if any (millimetre)			
Claim of equivalent power <sup>(a)</sup>	-	If yes, equivalent power (W)	-
		Chromaticity coordinates (x and y)	0,387 0,387
<b>Parameters for LED and OLED light sources:</b>			
R9 colour rendering index value	20	Survival factor	-
the lumen maintenance factor	-		
<b>Parameters for LED and OLED mains light sources:</b>			
displacement factor (cos $\phi_1$ )	0,51	Colour consistency in McAdam ellipses	3
Claims that an LED light source replaces a fluorescent light source without integrated ballast of a particular wattage.	-(b)	If yes then replacement claim (W)	-
Flicker metric (Pst LM)	0,5	Stroboscopic effect metric (SVM)	0,6

(a)-: not applicable;

(b)-: not applicable;



Model placed on the Union market from 31/08/2021



**EPREL registration number:** 884502

<https://eprel.ec.europa.eu/qr/884502>

**Supplier:** Optoga AB (Manufacturer)

**Website:** [www.optoga.com](http://www.optoga.com)

**Customer care service:**

**Name:** CEO

**Website:** [www.optoga.com](http://www.optoga.com)

**Email:** [stefan.larsson@optoga.se](mailto:stefan.larsson@optoga.se)

**Phone:** +46 589-490 951

**Address:**

Köpingsvägen 4

73231 Arboga

Sweden